



*"It was my life's dream to make such a research institute possible."*

*Amalia Fleming*

---

# INSIDE THIS ISSUE

---

## PG. 2

A bit of history

---

## PG. 3

The Center today

---

## PG. 4

Looking into the future

Dear readers,

It is a pleasure to welcome you to the inaugural issue of the Biomedical Sciences Research Center "Alexander Fleming" newsletter. This is part of our effort to promote and disseminate the Center's research work, both towards academic circles and the general public, especially the student community. We are grateful to the Hellenic Foundation for Research and Innovation for funding this project, titled OpenFleming, through a grant under their "Science and Society" Action – "Research, Innovation and Dissemination Hubs".

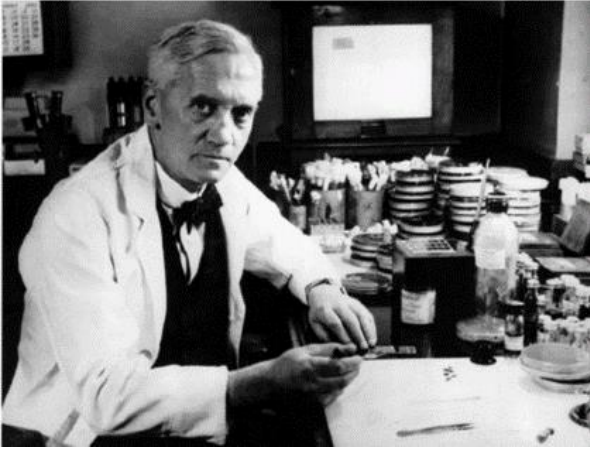
It's been 25 years since our Center started operating and in this first newsletter we will give a brief introduction, summarizing our history, highlighting our current activities and sharing our vision for further development. Future issues will focus on topical highlights of our research and their impact on society.

Established by Amalia Fleming with the mission of fostering state-of-the-art research, training and innovation in the biomedical sciences, BSRC Fleming has evolved through the years into a dynamic hub of knowledge and scientific discovery, an evolution driven by the unwavering commitment and passion of our dedicated team of researchers, staff and collaborators.

Extending my deepest appreciation to you, our readers and followers, for your interest in our center's endeavors, I hope you find this newsletter informative and engaging.

*George Panayotou*  
*Director & Chairman of the Board*

## SIR ALEXANDER FLEMING



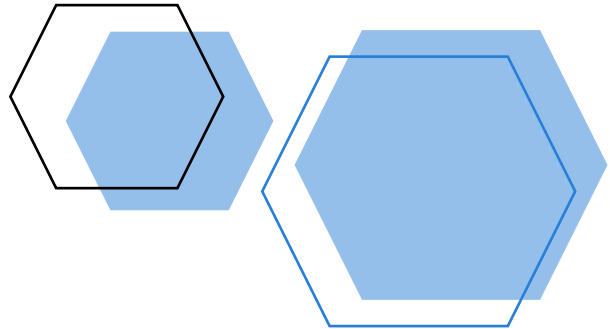
Sir Alexander Fleming (1881-1955) was a Scottish physician and bacteriologist working at St. Mary's Hospital in London.

After witnessing the death of hundreds of soldiers during World War I due to wound infections, he returned to his lab focused on identifying substances with antibacterial action.

In 1928 he discovered penicillin, the world's first antibiotic.

For this discovery Fleming was awarded the Nobel Prize in Medicine in 1945 (jointly with Florey and Chain for its development).

# YESTERDAY



## AMALIA FLEMING



Amalia Koutsouri-Fleming (1912-1986) was a Greek physician and microbiologist, as well as a passionate activist for democracy, human rights and women's emancipation.

In 1947 she was awarded a fellowship from the British Council to do postgraduate work in the laboratory of the Nobel laureate Sir Alexander Fleming in London.

Amalia worked in Fleming's laboratory for several years doing research on antimicrobial agents and antibiotic resistance, authoring nine publications from 1947 to 1952.

## THE BRSC "ALEXANDER FLEMING"



Alexander and Amalia Fleming were married in 1953. After his death, Amalia founded in his memory the Hellenic Foundation for Basic Biological Research "Alexander Fleming" in 1965. Amalia Fleming's vision was: *"to establish a Center of scientific and technological excellence, which will attract young Greek researchers and will be based on meritocracy, excellence and innovation"*.

After many years of efforts and interruptions due to political events – including the imprisonment of Amalia during the military junta - construction of the building finished in 1993. In 1995 the BSRC "Alexander Fleming" was established, followed by the appointment of the first Scientific Director and the first investigators in 1998 and 1999 respectively.



**FLEMING PERSONNEL:  
OUR MOST IMPORTANT ASSET**

- 22 Group Leaders
- 4 Staff Scientists
- 2 Junior Researchers
- 38 Post-docs
- 30 PhD candidates
- 22 Technicians
- 29 Admin & Tech support
- 15 MSc students
- Many undergraduate students

# TODAY

## RESEARCH



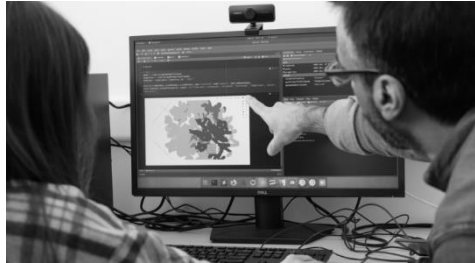
Cutting edge basic and translational research on:

- Immunity & Inflammation
- Neuroscience
- Cancer Biology
- RNA Biology & Epigenetics
- Bioinformatics & Computational Biology

State-of-the-art technologies & core facilities

Coordination of two National Research Infrastructures (InfrafrontierGR and Elixir-GR)

## TRAINING



State-of-the-art training and mentorship to scientists and students of all levels

Marie-Curie training programs

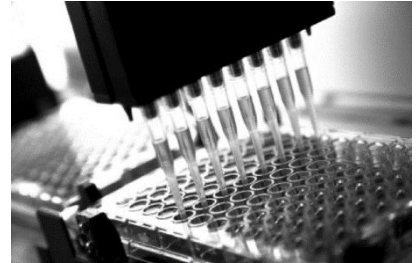
International courses on animal models

PhD studentships

MSc programs (jointly with ΕΚΠΑ)  
- MSc in Molecular Biomedicine  
- MSc in Neurosciences

Undergraduate and postgraduate internships

## INNOVATION



Active engagement in technology transfer and innovation

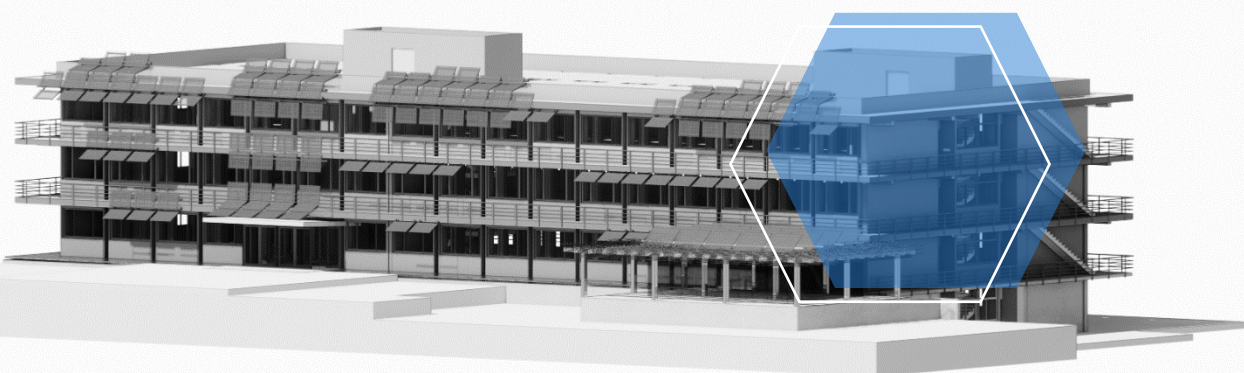
Innovation & Enterprise Unit (IEU) founded in 2005

Biomedcode spin-off company specializing in preclinical drug evaluation founded in 2006

> 600 Material Transfer Agreements (MTA)

11 patent applications





Building renovation to new safety, energy and environmental efficiency standards and equipment upgrading to state-of-the-art instrumentation.

(Supported by the EU National Recovery & Resilience Fund Greece 2.0)

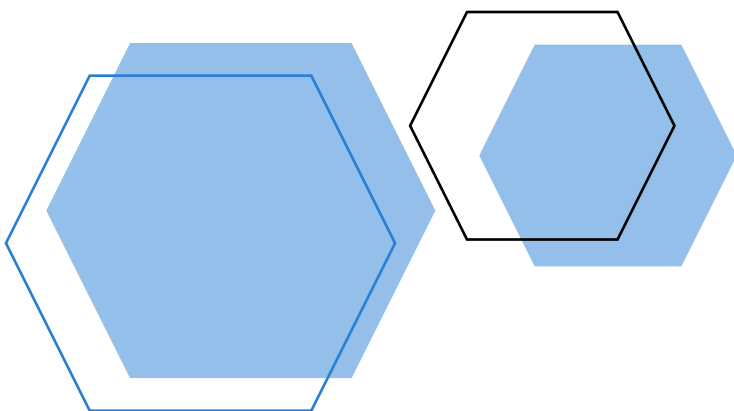
---

## BIOTECHNOPOLIS PARK



An innovative Biotechnology Hub. Approx. 12,000 sq.m. of laboratory and office space for startups, R&D units, research labs and facilities.

(Supported in part from the European Investment Bank)



# TOMORROW

## THE ALEXANDER FLEMING MUSEUM



A collection of Sir Alexander Fleming's original laboratory notes, instruments, photos and various personal belongings curated and displayed in a new museum.

(Supported in part by the Hellenic Foundation for Research & Innovation "Science & Society" grant)