

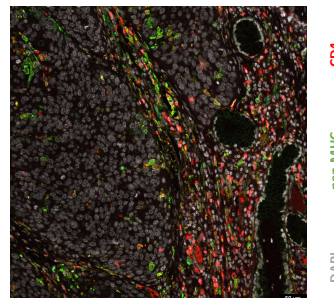


"ALEXANDER FLEMING"
Biomedical Sciences Research Center

Call for Expressions of Interest

Postdoctoral fellow – Tsoumakidou Lab | BSRC Fleming

The laboratory of Dr. Maria Tsoumakidou ([Tsoumakidou Lab](http://TsoumakidouLab)) at the Biomedical Sciences Research Center 'Alexander Fleming' (www.fleming.gr) is seeking a Postdoctoral Fellow. The interests of the lab focus on oncology research with an emphasis on immunotherapy. Candidates must hold a PhD in Molecular Biology with at least 1 relevant first author publication and have excellent command of the English language. Experience in the development and characterization of in vivo and ex vivo models of disease is highly desirable.



The successful applicants will become members of a highly interactive research group and are expected to interact closely with scientists from different disciplines, including biologists, bioinformaticians, chemists and medical doctors.

Expressions of interest should be sent electronically to tsoumakidou@fleming.gr. Candidates should email a cover letter outlining their interests and areas of expertise (maximum 1 page long), together with detailed curriculum vitae, including contact information of two referees.

Deadline for expression of interest: 16 May 2022

BSRC Fleming is a top-ranked Greek non-profit research organisation focusing on scientific and technological excellence, training and innovation in biomedical sciences. The Center was established in 1998, and operates under the supervision of the General Secretariat for Research and Innovation (GSRI) of the Hellenic Ministry of Development and Investments. Competitive funding each year amounts to 75-85% of the total budget of the Center, an achievement that underlies Fleming's strategic prioritization of research and innovation. BSRC Fleming has gained international recognition for its pioneering research towards understanding the molecular and cellular basis of human diseases, such as autoimmune disorders, cancer, neurodegenerative conditions, osteoporosis, pulmonary fibrosis and others, and the development of new approaches for their diagnosis and treatment. Fleming's strength and international visibility lies on its focus and success in developing and characterizing animal models that mimic human disease and the Center has consequently invested heavily on related infrastructures. The Center has achieved top performance indicators of academic and research excellence while practices transparent and fair processes for all personnel recruitment, including researchers ensuring equal treatment of all applicants based solely on scientific merit, academic qualifications and expertise in specific research areas as required.