

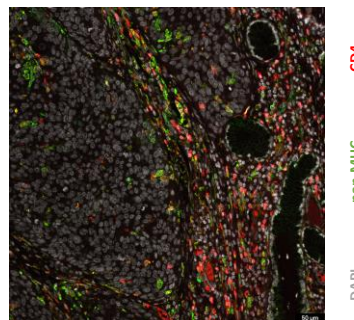


"ALEXANDER FLEMING"
Biomedical Sciences Research Center

Call for Expressions of Interest

Postdoctoral fellow – Tsoumakidou Lab | BSRC Fleming

The laboratory of Dr. Maria Tsoumakidou ([Tsoumakidou Lab](#)) at the Biomedical Sciences Research Center 'Alexander Fleming' (www.fleming.gr) is seeking for a skilled and ambitious biomedical scientist for a postdoctoral research position. The interests of the lab focus on translational immuno-oncology with an emphasis on cancer immunotherapy using animal models and human samples. Innovative technologies are applied in the department, such as humanized immunodeficient patient-derived xenografts, tumor- chip, magnetic nanomedicines. We seek candidates with sound experience in the analysis of **molecular and cellular mechanisms of immunity in homeostasis and disease, preferably cancer**. The post is intended as a step in seeking a career in the field of immuno-oncology and the assessment of applicants will be based primarily on their research skills and their potential as researchers.



Candidates must hold a PhD in Biological Sciences or related fields and must have at least 1 first author publication.

Expressions of interest should be sent electronically to tsoumakidou@fleming.gr. Candidates should email a cover letter outlining their interests and areas of expertise (maximum 1 page long), together with a detailed curriculum vitae, including contact information of two or more referees.

Deadline for expression of interest: 30 July 2020

BSRC Fleming is a top-ranked Greek non-profit research organization focusing on scientific and technological excellence, training and innovation in biomedical sciences. The Center was established in 1998, and operates under the supervision of the General Secretariat for Research and Technology (GSRT) of the Hellenic Ministry of Education. Competitive funding each year amounts to 75-85% of the total budget of the Center, an achievement that underlies Fleming's strategic prioritization of research and innovation. The Center has gained international recognition for its pioneering research towards understanding the molecular and cellular basis of human diseases such as autoimmune diseases, cancer, neurodegenerative disorders, osteoporosis, pulmonary fibrosis and others, and the development of new approaches for their diagnosis and treatment. Fleming's strength and international visibility lies on its focus and success in developing and characterizing animal models that mimic human disease and the Center has consequently invested heavily on related infrastructures.