

John Innes Centre  
Norwich Research Park  
Colney ■ Norwich NR4 7UH ■ UK  
T +44 (0) 1603 450400 F +44 (0) 1603 450011  
admin@TSL.ac.uk [www.TSL.ac.uk](http://www.TSL.ac.uk)

3rd January 2008

Dear Colleague

**New Investigator position at the Sainsbury Laboratory**

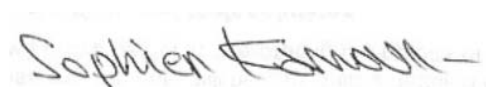
I am seeking your assistance in helping us to recruit an outstanding new investigator to the Sainsbury Lab (SL), located at the John Innes Centre site in Norwich, UK (see [www.tsl.ac.uk](http://www.tsl.ac.uk)). We can recruit at any level and anticipate that the successful candidate will join SL later in 2008. Review of applications will commence on 1<sup>st</sup> February 2008, and the position will remain open until filled.

In the last 16 years, the SL has made a major impact on our understanding of how plants and microbes interact. SL investigations of virus resistance in the Baulcombe lab were instrumental in revealing the role of short RNAs in gene regulation and silencing, one of the most exciting of current topics. We have discovered many of the key components involved in plant disease resistance, and are striving to understand how they interact to create the molecular networks that thwart pathogens and parasites. Research at the SL has been driven by curiosity about how plants interact with other organisms, but we retain the freedom to follow our curiosity in new directions when the science compels it. For the next 5 years, we consider it imperative to broaden our scope beyond a narrow focus on plant/microbe interactions, and to recruit an individual who will enrich our repertoire of in house skills. For example, we will welcome applicants with skills in crystallography, mass spectrometry, computational biology or cell biology. We are extremely well set up to investigate plant biology, but would be pleased to consider applicants with complementary expertise working on other systems.

SL investigators receive internationally competitive salaries, and are given generous resources for their work. Appointments are for 5 years in the first instance and renewal is based on a review of performance. In addition to a generous annual equipment budget to be split between 5 investigators, each investigator receives a start up package and can draw on £1.2M to be spent as the investigator sees fit over 5 years.

I would be very grateful if you could ensure the attached advertisement is posted in your department and brought to the attention of creative and imaginative colleagues who might wish to take advantage of this unusual opportunity.

Yours sincerely



**Professor Sophien Kamoun**  
Senior Research Scientist  
The Sainsbury Laboratory

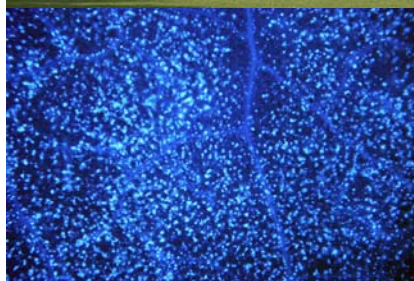
*enc*

# THE SAINSBURY LABORATORY

## Group Leader Position Plant and Microbial Sciences



The Sainsbury Laboratory is a world-leading research facility in plant and microbial science and is generously supported by the Gatsby Charitable Foundation. Based on the Norwich Research Park and closely linked to the University of East Anglia and the John Innes Centre, the Lab hosts approximately 70 research scientists and support staff.



The Sainsbury Laboratory invites applications for a group leader position in plant and microbial sciences. The successful candidate will develop a research program in any area of biology that is relevant to the laboratory objective of making fundamental discoveries in the science of plant-microbe interactions, and that is complementary to the activities of the current group leaders. We encourage applications from scientists who seek to "cross over" to plants and plant-associated microbes, bringing with them new expertise and approaches to fundamental biological problems.



Currently, The Sainsbury Laboratory hosts five research groups funded by the Gatsby Charitable Foundation and linked with the University of East Anglia and the John Innes Centre. The Group Leader position is a 100% research position with no formal teaching duties and with minimal administrative responsibilities. Each group receives an allocation of ~£1.6M over six years in addition to an internationally competitive group leader salary and shared resources for large equipment. Facilities are available for up to twelve scientists per group. The group leader will have access to in house state of the art bioinformatics, next generation sequencing, microscopy, plant transformation, and proteomics facilities.



We invite applications from scientists at any stage of their career in any of the following disciplines; biochemistry, cell biology, computational biology, epigenetics, biodiversity, evolutionary biology, genetics, genomics, microbiology, molecular biology, population biology, structural biology, and systems biology. The appointment could be made at either junior or senior level and will be reviewed after five and seven years.



Applications will be accepted until a suitable candidate is found. Informal enquiries should be directed to Sophien Kamoun ([sophien.kamoun@tsl.ac.uk](mailto:sophien.kamoun@tsl.ac.uk)). Please email formal applications with a CV, names of 3 referees and a 2 page statement of research interests to [hr@tsl.ac.uk](mailto:hr@tsl.ac.uk).

Ref HOL04/2007